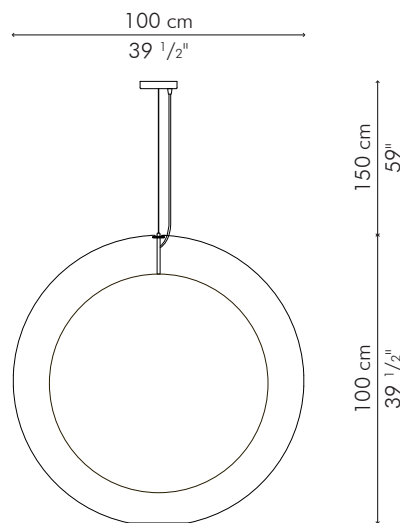
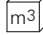


HANGING LAMP, round large



 4.60 kg / 10 lbs

 14 kg / 31 lbs

 1.092 m³

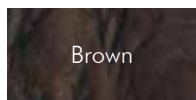
1 x 100 watts

Surface mounted pre-wired lamp

E26 / E27

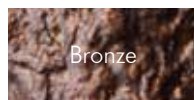
110V 60Hz / 230V 50Hz

INDOOR Salago fiber, steel, fiberglass reinforced polymer



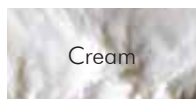
Brown

LPCC-B-3939



Bronze

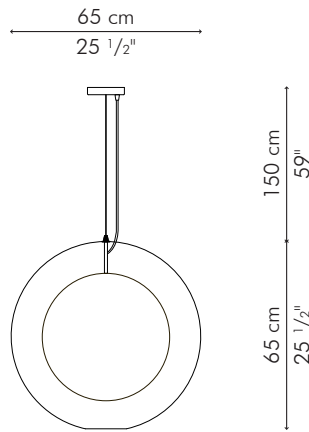
LPCC-BZ-3939



Cream

LPCC-C-3939

HANGING LAMP, round medium



 1.60 kg / 4 lbs

 7 kg / 15 lbs

 0.321 m³

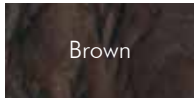
1 x 100 watts

Surface mounted pre-wired lamp

E26 / E27

110V 60Hz / 230V 50Hz

INDOOR Salago fiber, steel, fiberglass reinforced polymer



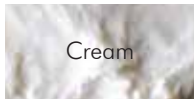
Brown

LPCC-B-2525



Bronze

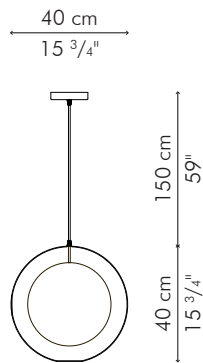
LPCC-BZ-2525




Cream

LPCC-C-2525

HANGING LAMP, round small



 0.75 kg / 2 lbs

 3 kg / 7 lbs

 0.085 m³

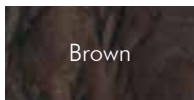
1 x 75 watts

Surface mounted pre-wired lamp

E26 / E27

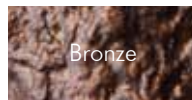
110V 60Hz / 230V 50Hz

INDOOR Salago fiber, steel, fiberglass reinforced polymer



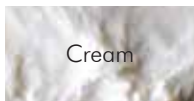
Brown

LPCC-B-1515



Bronze

LPCC-BZ-1515



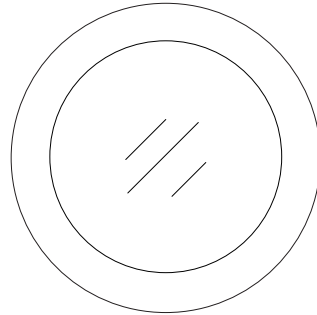
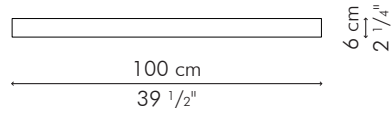
Cream


LPCC-C-1515


MIRROR, round

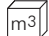


LARGE

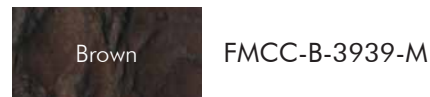


 13.05 kg / 29 lbs

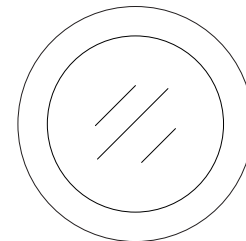
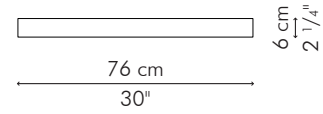
 15.55 kg / 34 lbs

 0.38 m³

mirror glass
80 cm Ø x 6 mm thickness
(31 1/2" Ø x 1/4")



SMALL



7 kg / 15 lbs

10.25 kg / 23 lbs

0.24 m³

mirror glass
50.5 cm Ø x 6 mm thickness
(20" Ø x 1/4")



INDOOR Salago fiber, steel, mirror glass